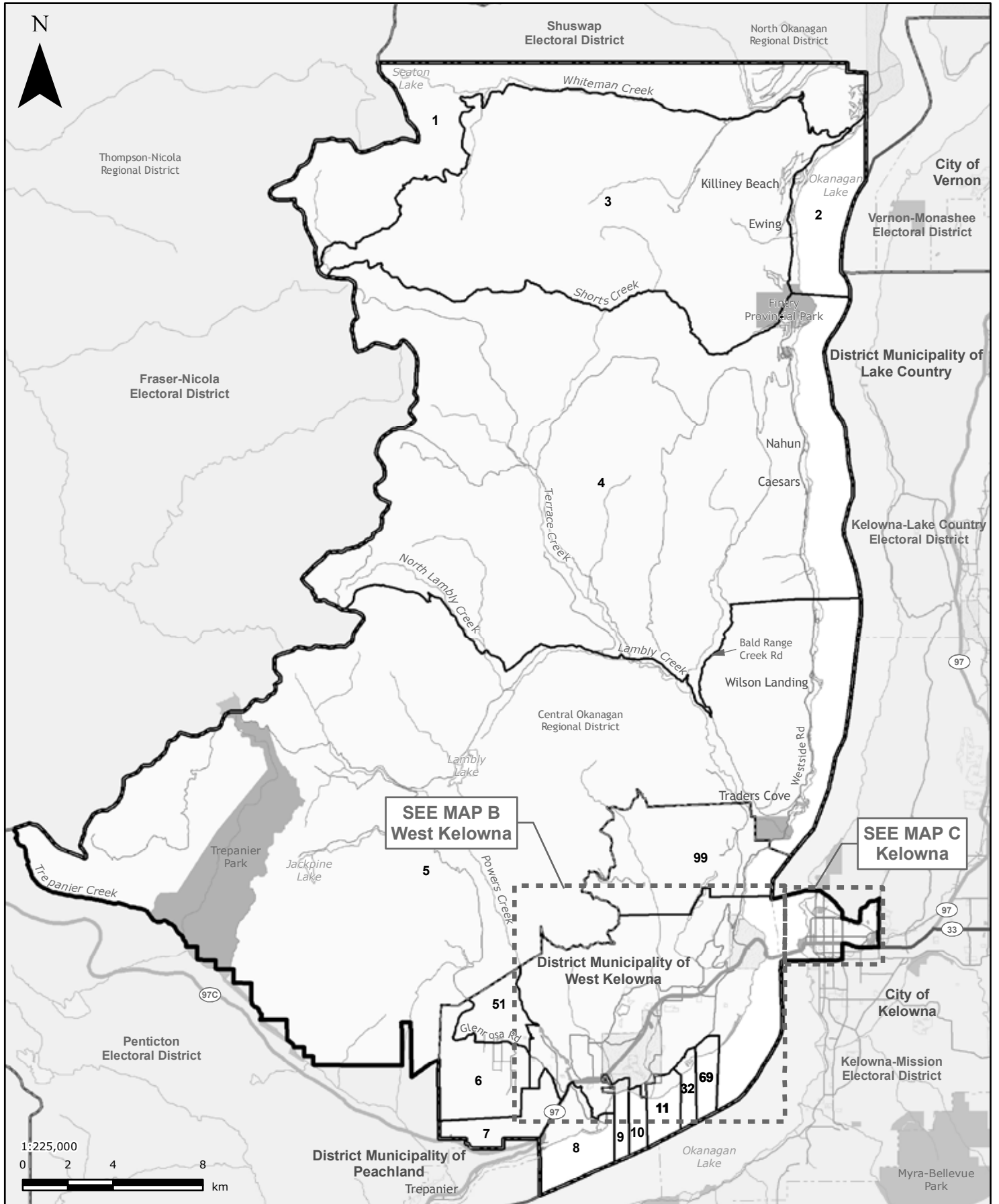


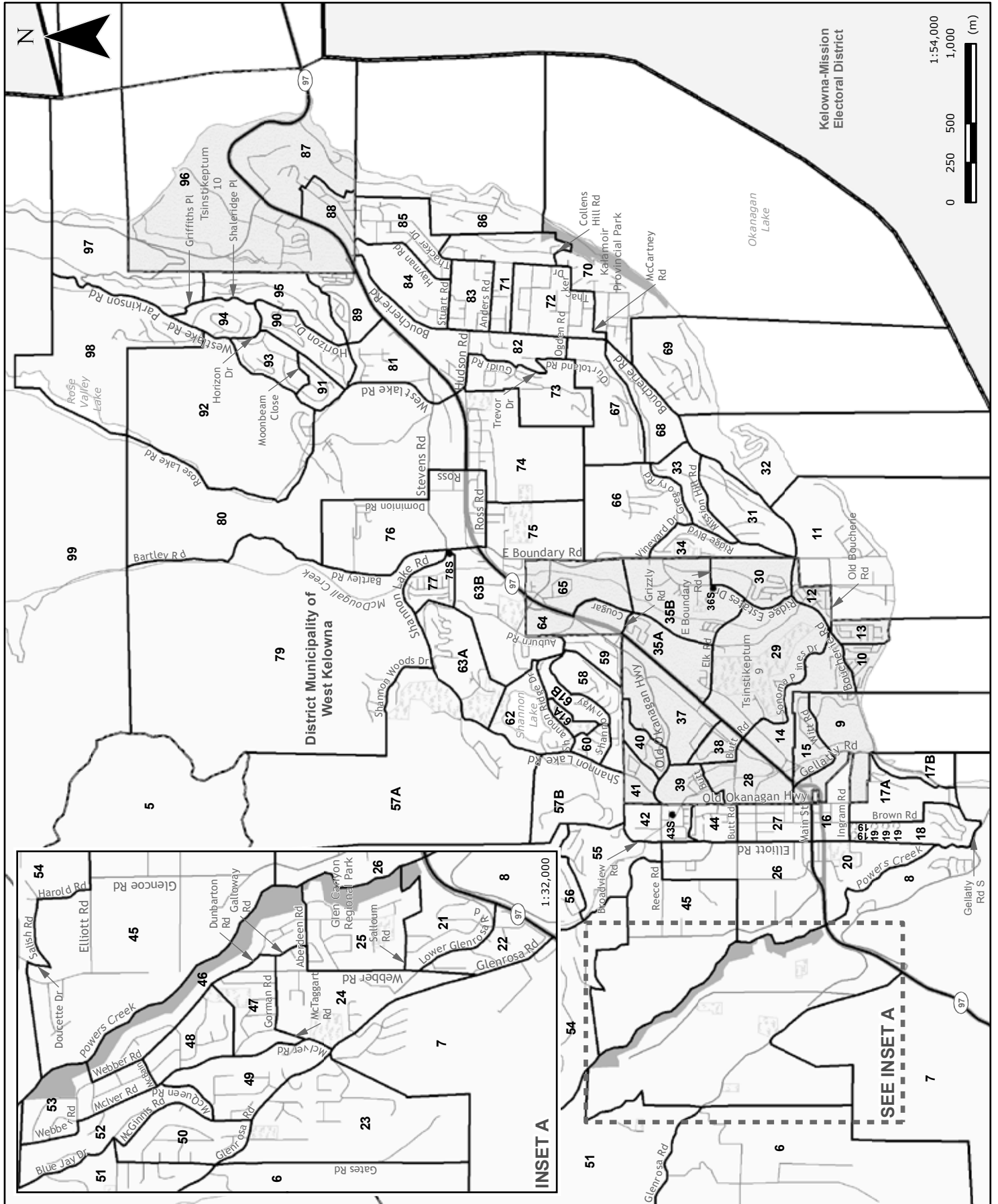
Westside-Kelowna (WTK)
MAP A - Westside-Kelowna Electoral District

Statement of Votes
 40th Provincial General Election
 May 14, 2013

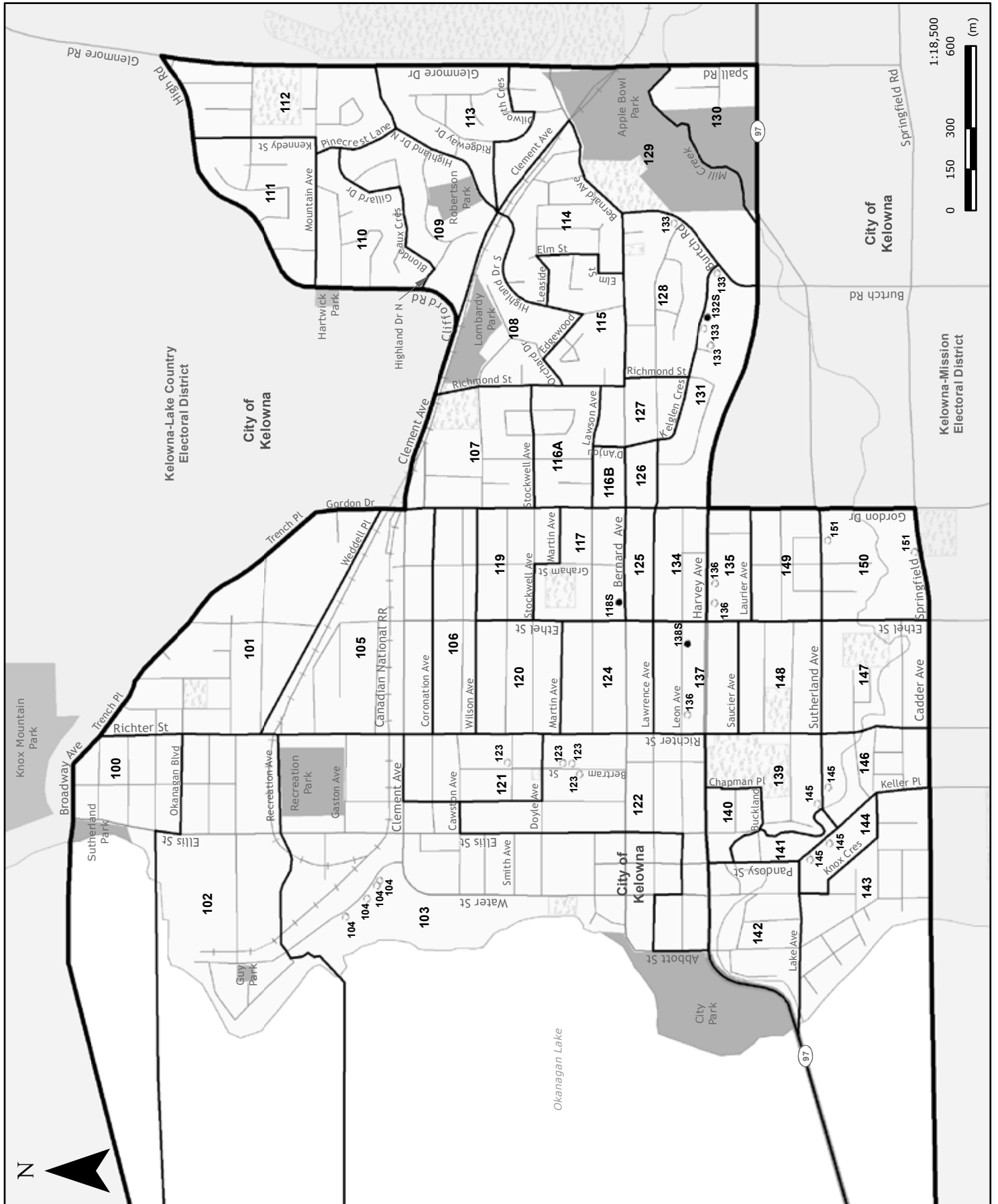


SEE MAP B
 West Kelowna

SEE MAP C
 Kelowna



**Westside-Kelowna (WTK)
MAP C - Kelowna**



	Carole Gordon	Brian Guillou	Ben Stewart	Total valid votes	Rejected ballots	Registered voters
	NDP	CP	LIB			
Advance voting						
Emmanuel Assembly Church	526	221	1,156	1,903	4	
Grace Baptist Church	207	61	282	550	0	
Kelowna Curling Club	299	51	401	751	6	
Lakeview Heights Baptist Church	84	40	251	375	0	
General voting						
Voting area						
1	51	29	84	164	3	367
2	51	5	45	101	4	194
3	46	16	58	120	3	279
4 *1	-	-	-	-	-	166
5 *1	33	5	90	128	1	298
6	22	13	69	104	0	241
7	19	15	59	93	0	217
8	25	16	106	147	0	388
9	11	9	66	86	0	247
10	23	13	38	74	1	288
11	16	11	87	114	1	335
12	24	14	49	87	0	251
13	25	11	13	49	1	247
14	44	16	115	175	0	504
15	27	13	44	84	1	264
16	18	6	28	52	0	180
17A	29	13	94	136	3	467
17B	11	0	26	37	0	117
18	23	27	73	123	2	336
19	25	8	62	95	3	303
20	8	8	31	47	0	228
21	14	9	49	72	1	247
22	9	3	27	39	0	159
23	53	7	83	143	0	373
24	37	9	54	100	0	278
25	32	17	40	89	0	321
26	34	11	57	102	1	305
27	37	20	43	100	0	326
28	26	13	95	134	1	321
29	32	13	77	122	1	485
30	28	6	28	62	0	300
31	22	9	97	128	0	311
32	7	2	44	53	0	154
33	19	9	95	123	0	240
34	26	12	115	153	1	375
35A	16	16	58	90	1	265
35B	29	6	32	67	0	333
36S *2	-	-	-	-	-	57
37	25	12	46	83	2	408
38	41	9	87	137	0	390

Westside-Kelowna (WTK)
Voting results by voting area

Statement of Votes
 40th Provincial General Election
 May 14, 2013

Voting area (continued)	Carole Gordon	Brian Guillou	Ben Stewart	Total valid votes	Rejected ballots	Registered voters
	NDP	CP	LIB			
39	30	7	18	55	0	217
40	11	12	22	45	2	211
41	22	7	12	41	0	189
42	38	14	69	121	1	316
43S	8	4	16	28	1	111
44	27	4	33	64	0	281
45	30	23	67	120	1	329
46	36	13	52	101	2	278
47	27	4	52	83	1	298
48	41	20	53	114	1	335
49	38	10	64	112	0	328
50	51	16	67	134	1	360
51	33	10	78	121	0	286
52	39	11	50	100	2	302
53	43	10	77	130	1	337
54	24	20	74	118	0	300
55	42	22	101	165	0	364
56	23	12	89	124	0	414
57A	30	17	136	183	0	478
57B	12	4	47	63	2	213
58	38	15	83	136	1	342
59	35	12	49	96	0	218
60	16	11	27	54	0	174
61A	13	4	25	42	0	116
61B	43	14	72	129	0	377
62	53	11	111	175	1	394
63A	24	9	80	113	0	318
63B	32	20	106	158	0	389
64	16	7	28	51	0	208
65	45	21	34	100	1	395
66	9	12	76	97	1	271
67	17	13	75	105	0	280
68	19	9	63	91	0	227
69	24	11	71	106	0	266
70	31	10	89	130	0	300
71	30	15	89	134	0	358
72	60	6	69	135	0	324
73	27	4	97	128	1	396
74	26	20	58	104	0	344
75	19	9	38	66	2	321
76	33	14	52	99	0	331
77	38	28	110	176	2	347
78S	17	11	14	42	0	101
79	23	12	100	135	1	358
80	17	16	62	95	0	265
81	31	11	34	76	1	229
82	18	3	72	93	1	268
83	20	17	47	84	0	234
84	14	7	31	52	1	145
85	33	13	89	135	2	394

Voting area (continued)	Carole Gordon	Brian Guillou	Ben Stewart	Total valid votes	Rejected ballots	Registered voters
	NDP	CP	LIB			
86	12	12	75	99	0	354
87	19	14	40	73	0	198
88	11	6	28	45	2	220
89	8	4	53	65	0	207
90	37	17	104	158	2	400
91	31	6	51	88	0	264
92	34	10	70	114	1	296
93	46	17	90	153	0	411
94	39	4	91	134	0	236
95	24	11	102	137	1	364
96	42	8	49	99	0	443
97	44	12	81	137	1	365
98	26	13	116	155	1	361
99	9	4	20	33	0	118
100	45	9	41	95	1	276
101	43	15	37	95	0	290
102	49	11	40	100	0	320
103	33	11	72	116	0	531
104	10	6	66	82	0	337
105	9	5	26	40	1	185
106	58	11	39	108	1	326
107	40	15	52	107	3	348
108	31	6	41	78	2	227
109	17	13	53	83	0	228
110	31	10	48	89	0	234
111	41	13	64	118	0	295
112	42	14	65	121	1	307
113	42	13	64	119	0	287
114	38	14	42	94	1	313
115	53	14	39	106	1	302
116A	35	6	33	74	2	230
116B	11	13	50	74	1	238
117	35	6	52	93	2	352
118S	9	9	12	30	0	65
119	38	3	42	83	1	242
120	55	3	41	99	3	353
121	28	7	43	78	1	327
122	20	3	71	94	1	429
123	24	13	50	87	1	278
124	37	11	39	87	2	350
125	27	5	28	60	0	206
126	39	17	33	89	0	261
127	36	14	38	88	2	284
128	35	16	58	109	2	354
129	28	5	52	85	0	257
130	48	19	58	125	1	421
131	31	8	36	75	0	331
132S *2	-	-	-	-	-	79
133	30	13	36	79	1	294
134	19	10	22	51	0	224

Westside-Kelowna (WTK)
Voting results by voting area

Statement of Votes
 40th Provincial General Election
 May 14, 2013

Voting area (continued)	Carole Gordon	Brian Guillou	Ben Stewart	Total valid votes	Rejected ballots	Registered voters
	NDP	CP	LIB			
135	17	4	7	28	0	166
136	25	15	34	74	0	257
137	31	12	23	66	2	340
138S *2	25	25	49	99	1	131
139	38	8	53	99	2	273
140	40	3	32	75	1	323
141	23	13	38	74	1	295
142	27	5	42	74	0	309
143	33	5	80	118	1	327
144	23	2	10	35	0	256
145	31	12	33	76	0	247
146	53	12	75	140	2	353
147	41	12	44	97	2	298
148	55	5	40	100	3	271
149	26	4	16	46	1	182
150	25	12	56	93	0	231
151	35	17	104	156	2	310
Sub totals	5,657	2,074	10,871	18,602	128	45,389
s. 98 Special	117	33	144	294	12	
s. 99 Absentee - in ED	525	174	892	1,591	10	
s. 100 Absentee - out of ED	90	21	127	238	39	
s. 101 Absentee - advance	73	28	127	228	8	
s. 104 Voting in DEO office	112	32	216	360	9	
s. 106 Voting by mail	14	6	28	48	3	
Grand totals	6,588	2,368	12,405	21,361	209	45,389
% of valid votes	30.84%	11.09%	58.07%			

Summary

Valid votes - General and advance	18,602	87.08%	Total valid votes
s. 98 Special	294	1.38%	Total valid votes
s. 99 Absentee - in ED	1,591	7.45%	Total valid votes
s. 100 Absentee - out of ED	238	1.11%	Total valid votes
s. 101 Absentee - advance	228	1.07%	Total valid votes
s. 104 Voting in DEO office	360	1.69%	Total valid votes
s. 106 Voting by mail	48	0.22%	Total valid votes

Total valid votes 21,361

Rejected ballots	209	0.97%	Ballots cast
Registered voters who voted	21,570	47.52%	Registered voters

Registered voters 45,389

Candidate elected: Ben Stewart (LIB)

*1 Voting areas 4 and 5 combined

*2 Voting areas 36S, 132S and 138S combined